



Quaker in RapidShield™ Floor Coatings

Facts about us:

- Founded 1918
- More than 25 years in coatings
- Listed NYSE
- Net Sales \$581.6 million
- 1377 Associates
- \$16.9 million investment in R&D 2008
- Global organization focused 100% on process chemicals and services

What businesses are we in?

- Coatings
- Metalworking
- Tube & Pipe
- Steel
- Fluid Power
- Chemical Management Services

Are our customers satisfied?

To quantify the level of customer satisfaction, we annually conduct a global customer satisfaction survey. Our performance is considered high in the areas of product performance, process application know-how and technical expertise. Another attribute with a high satisfaction rating includes delivery.

What is RapidShield™?

RapidShield™ is a field applied high-performance polyester UV-curable floor coating system designed for your new or existing concrete floor. The one-component formulation is applied by roller or squeegee. It requires a mobile UV Floor Curing Lamp to cure the system.

Why should you use RapidShield™ of Quaker?

- Cures instantly
- Improved wear and durability
- Excellent chemical resistance
- One-component formulation
- No VOCs and low odor
- Reduced floor maintenance costs
- Reduced application downtime
- Increased safety

How do you need to apply RapidShield™?

Comparable to existing floor coating systems, RapidShield™ requires complete removal of the existing coating, with the floor ground and shot blasted. RapidShield™ is applied by either roller or squeegee. The product is cured using a driven UV Floor Curing Lamp that cures the coating instantly.

To be able to apply RapidShield™ you must have completed the Quaker Certified RapidShield™ Coating Contractor Training Course (CFC). Please contact your Quaker Representative.

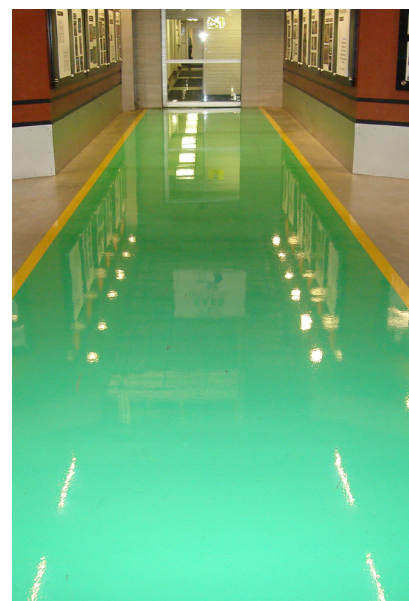
Which colors do we offer you?

Quaker offers a standard color palette, but has the capability to provide custom colors. (Ask to see our color chart.)

Who are our customers?

A selected list:

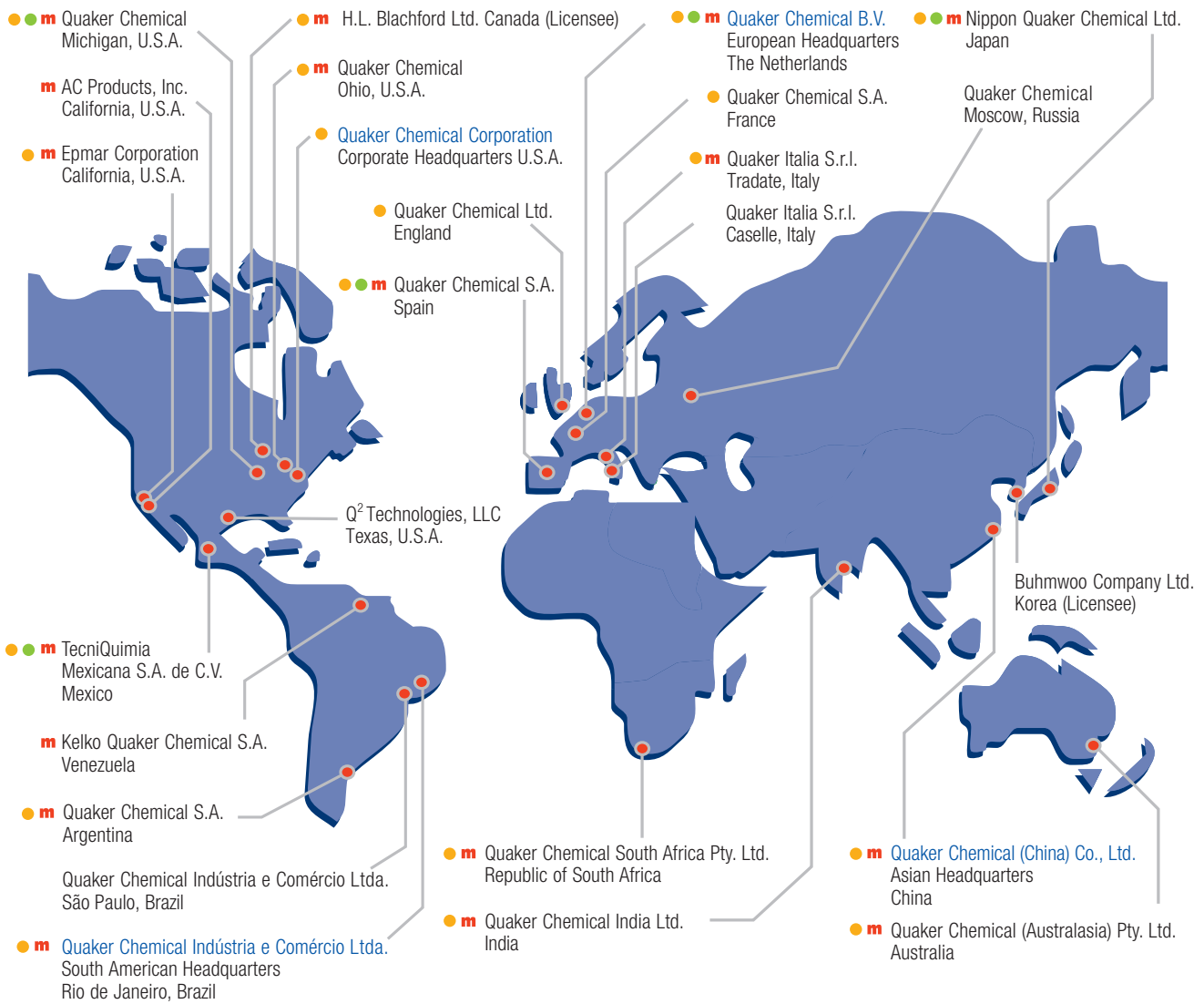
- Aircraft component manufacturing plants
- Automotive stamping plants
- Automotive powertrain plants
- Can manufacturers
- Truck and equipment assembly plants
- Warehouses





Where in the world are we?

We have staff on the ground in every region of the world. Our infrastructure of sales, service, research and development, manufacturing and operations facilities and systems are all designed to support you on a local basis-whether you are in one location or at facilities around the world.



● = ISO 9001 ● = ISO 14001 m = Manufacturing